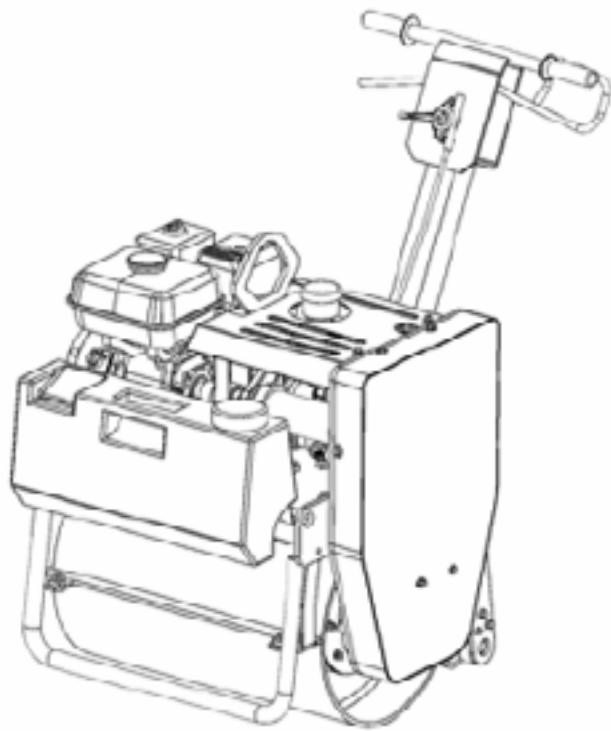


# OWNER'S MANUAL

## Assembly & Operating Instructions



### VIBRATORY ROLLER

ROL641.V24



Thank you for choosing our Equipment. It was carefully engineered to provide excellent performance when properly operated and maintained.

Please read this entire manual before operating the Equipment. It instructs you on how to set up, operate, and maintain your Equipment safely and easily. Ensure that you and any other persons operating the Equipment carefully follow the recommended safety practices at all times, as failure to do so could result in personal injury or property damage.

All information in this manual is relevant to the most recent product information available at the time of printing. Review this manual frequently to familiarize yourself with the machine, its features, and operation. Please note that this Owner’s Manual may cover a range of product specifications for various models. Characteristics and features discussed and/or illustrated in this manual may not be applicable to all models. We reserve the right to change product specifications, designs, and equipment without notice and without incurring obligation.

All the power testing information used to establish the power rating of the engine equipped on this Equipment can be found in the engine manufacturer’s manual or website. If you encounter any problems or have questions about the machine, please contact our Customer Support Department.

Throughout this manual, all references to the right and left side of the Equipment are observed from the operating position. The engine manufacturer is responsible for all engine-related issues concerning performance, power-rating, specifications, warranty, and service. Refer to the engine manufacturer’s Owner’s Manual, packed separately with your Equipment, for more information.

### Customer Support

Before initiating a product return, kindly reach out to our dedicated Customer Support Department at Bigger Boyz Toyz. We are here to assist you.

Phone: 02 4257 4787

Email: [bbt@bbta.com.au](mailto:bbt@bbta.com.au)

Warehouse: Unit 2/3 Delta Place, Albion Park Rail NSW 2527

If you have difficulty assembling the product or have any questions about the controls, operations, or maintenance of the equipment, please don’t hesitate to get in touch with our Customer Support Department.

# CONTENTS

- SAFETY & ALERT SYMBOLS..... 4**
  - FOR YOUR SAFETY AND THE SAFETY OF OTHERS!..... 4
- ADDITIONAL INFORMATION AND POTENTIAL CHANGES ..... 4**
- HAZARDS SYMBOLS ..... 5**
- GENERAL SAFETY ..... 6**
  - TRANSPORTING ..... 7
  - MAINTENANCE..... 7
  - EMERGENCIES ..... 7
- GENERAL INFORMATION..... 8**
  - APPLICATION..... 8
  - CONSTRUCTION ..... 8
  - CONTROLS ..... 8
- OPERATION..... 9**
  - POWER ON..... 9
  - USING THE ROAD ROLLER..... 9
- STOP ENGINE..... 10**
- MAINTENANCE ..... 11**
  - ENGINE PERIODIC CHART ..... 11
  - ENGINE OIL..... 12
  - AIR CLEANER ..... 12
  - SETTLING CUP..... 13
  - SPARK PLUG..... 13
  - CARBURETOR IDLE SPEED ADJUSTMENT..... 13
  - HANDREST ADJUSTMENT ..... 13
- TRANSPORT AND STORAGE ..... 13**
  - LONG-TERM STORAGE OF OTHER PARTS OF THE ROLLER: ..... 14
  - TRANSPORTATION..... 14
  - STORAGE ..... 14
- TROUBLESHOOTING..... 15**
- SPECIFICATION ..... 15**
- REPLACEMENT PARTS LIST.....16**

# SAFETY & ALERT SYMBOLS

## FOR YOUR SAFETY AND THE SAFETY OF OTHERS!



Safety precautions should be followed all the time when operating this equipment. Failure to read and understand the Safety Messages and Operating Instructions could result in injury to yourself and others



This Operating Instructions has been developed to provide complete instructions for the safe and efficient operation of this equipment. Refer to the engine manufactures instructions for data relative to its safe operation.



**WARNING:** Read and thoroughly understand all instructions in this equipment and on the safety decals before assembling or operating this equipment. Failure to do so may cause serious injury or death. Do not allow anyone to operate this equipment who has not read this manual. As with all power equipment, this equipment can be dangerous if assembled or used improperly. Do not operate this equipment if you have any questions concerning its safe operation. Contact our Customer Support Department for assistance in addressing any queries or concerns.

This SAFETY ALERT SYMBOL identifies important safety messages in this manual. Failure to follow this important safety information may result in serious injury or death.



**DANGER** indicates a hazardous situation which, if not avoided, will result in serious injury or death.



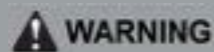
**WARNING** indicates a hazardous situation which, if not avoided, could result in serious injury or death.



**CAUTION** indicates a hazardous situation which, if not avoided, could result in minor or moderate injury.

## ADDITIONAL INFORMATION AND POTENTIAL CHANGES

We reserve the right to discontinue, change, and improve our products at any time without notice or obligation to the purchaser. The descriptions and sections contained in this manual were in effect at the time of printing. Equipment described within this manual may be optional. Some illustrations may not be applicable to your machine.



Your Responsibility—Restrict the use of this power machine to persons who have read, understood, and will follow the warnings and instructions in this manual and on the machine  
**SAVE THESE INSTRUCTIONS!**

# HAZARDS SYMBOLS

Potential hazards associated with the operation of this equipment will be referenced with Hazard Symbols which appear throughout this manual.

	<b>READ THE OWNER'S MANUAL(S)</b> : Read, understand and follow all instructions in the manual(s) before attempting to assemble and operate.
	<b>FACE PROTECTION</b> : Always wear safety goggles or safety glasses with side shields or a face shield when operating this product as well as ear protection.
	<b>WEAR GLOVES</b> : Always wear non-slip, heavy-duty protective gloves when operating this product.
	<b>WEAR SAFETY FOOTWEAR</b> : Always wear non-slip steel-toed safety footwear when operating this product.
	<b>BEWARE OF ROTATING BLADES</b> : This equipment has a rotating cutting blade capable of amputating hands and feet and throwing objects. Keep hands and feet out of openings while machine is running. Failure to observe these safety instructions could result in serious injury or death.
	<b>BEWARE OF FLYING OBJECTS</b> : Beware of thrown objects, which can ricochet causing serious injury to the eyes. Always wear eye & ear protection when operating.
	Never wear loose clothes or long jewellery and keep your long hair secured when operating machine. Never operate this machine in bare feet or sandals. Never use machine on a slope or hard smooth floor.
	<b>CARBON MONOXIDE AND GAS</b> : Exhaust contains poisonous carbon monoxide, a colourless and odourless gas. Breathing exhaust fumes can cause loss of consciousness and may lead to death.
	<b>RESPIRATORY HAZARDS</b> : ALWAYS wear approved respiratory protection when required.
	<b>PETROL OIL</b> : Petrol is extremely flammable and the vapours are explosive. Serious personal injury can occur when petrol is spilled on you or your clothing, which can ignite. In the event of a petrol spill, wash your skin and change clothes immediately.
	<b>BURN HAZARDS</b> : Engine components can produce intense heat. To avoid burns, DO NOT touch these areas while the engine is running or right after operations. Never operate the engine with removed heat shields or guards.
	DO NOT use in the rain.
	<b>ACCIDENTAL STARTING HAZARDS</b> : Always place the ON/OFF switch in the OFF position when the equipment is not in use.

## GENERAL SAFETY

- » DO NOT operate or service this equipment before reading this entire manual.
- » This equipment should not be operated by persons under 18 years of age.
- » NEVER operate this equipment without proper protective clothing, shatterproof glasses, steel-toed boots, and other protective devices required for the job.
- » NEVER operate this equipment when not feeling well due to fatigue, illness, or taking medicine.
- » NEVER operate this equipment under the influence of drugs or alcohol.
- » ALWAYS wear proper respiratory (mask), hearing, and eye protection equipment when operating this equipment.
- » Whenever necessary, replace the nameplate, operation, and safety decals when they become difficult to read.
- » The manufacturer does not assume responsibility for any accidents due to equipment modifications.
- » NEVER use accessories or attachments that are not recommended for this equipment. Damage to the equipment and/or injury to the user may result.
- » NEVER touch the hot exhaust manifold, muffler, or cylinder. Allow these parts to cool before servicing the engine or this equipment.
- » High Temperatures – Allow the engine to cool before adding fuel or performing service and maintenance functions. Contact with hot components can cause serious burns.
- » The engine section of this equipment requires an adequate free flow of cooling air. NEVER operate this equipment in any enclosed or narrow area where the free flow of air is restricted; it will cause serious damage to the equipment or engine and

- may cause injury to people.
- » ALWAYS refuel in a well-ventilated area, away from sparks and open flames.
- » ALWAYS use extreme caution when working with flammable liquids. When refuelling, stop the engine and allow it to cool.
- » NEVER operate this equipment in an explosive atmosphere or near combustible materials. An explosion or fire could result, causing severe bodily harm or even death.
- » DO NOT smoke around or near the machine. Fire or explosion could result from fuel vapours, or if fuel is spilled on a hot engine.
- » Topping-off to the filter port is dangerous, as it tends to spill fuel.
- » Stop the engine when leaving the equipment unattended.
- » Maintain this equipment in a safe operating condition at all times.
- » ALWAYS stop the engine before servicing, adding fuel and oil.
- » NEVER run the engine without an air filter. Severe engine damage may occur.
- » ALWAYS service the air cleaner frequently to prevent carburetor malfunctions.
- » ALWAYS check the equipment for loosened threads or bolts before starting.
- » ALWAYS ensure the operator is familiar with proper safety precautions and operational techniques before using the equipment.
- » ALWAYS store equipment properly when it is not being used. Equipment should be stored in a clean, dry location out of the reach of children.
- » DO NOT operate this equipment unless all guards and safety devices are attached and in place.
- » CAUTION must be exercised while servicing this equipment.
- » Keep all inexperienced and unauthorized people away from the equipment at all times.

- » Unauthorized equipment modifications will void all warranties.
- » NEVER pour or spray water over the engine.
- » Test the engine ON/OFF switch before operating. The purpose of this switch is to shut down the engine of the equipment.
- » Refer to the Engine User's Manual for engine technical questions or information recommended for the equipment.

## TRANSPORTING

- » ALWAYS shut down the engine before transporting.
- » Tighten the fuel tank cap securely and close the fuel cock to prevent fuel from spilling.
- » Drain fuel when transporting the equipment over long distances or bad roads.
- » When placing the equipment inside a truck bed for transport, always tie down the equipment.

## MAINTENANCE

- » NEVER lubricate components or attempt service on a running equipment.
- » ALWAYS allow the equipment a proper amount of time to cool before servicing.
- » Keep the equipment in proper running condition.
- » Fix damage to the equipment immediately and always replace broken parts.
- » Dispose of hazardous waste properly. Examples of potentially hazardous waste are used motor oil, fuel, and fuel filters.
- » DO NOT use wooden or plastic containers to dispose of hazardous waste.

## EMERGENCIES

- » ALWAYS know the location of the nearest fire extinguisher and first aid kit.
- » In emergencies, always know the location of the nearest phone or keep a phone on the job site. Also, know the phone numbers

of the nearest ambulance, doctor, and fire department. This information will be invaluable in the case of an emergency.

## GENERAL INFORMATION

### APPLICATION

A light road roller, known for its simplicity and ease of operation, is frequently employed for compacting sand, soil, and asphalt with high efficiency. It plays a vital role in the maintenance and repair of roads, pavements, bridges, and parking lots. The forward and backward mechanical drive is suitable for various working conditions and is exceptionally user-friendly.

### CONSTRUCTION

The road roller is specifically designed to compress loose soils (containing less than 30% gravel), establishing a sturdy and compact base for the construction of speedways, dams, airfields, railways, and various other infrastructure projects.

### CONTROLS

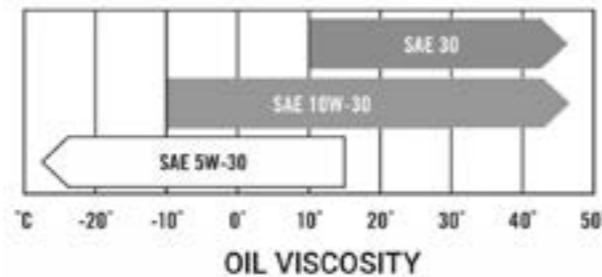
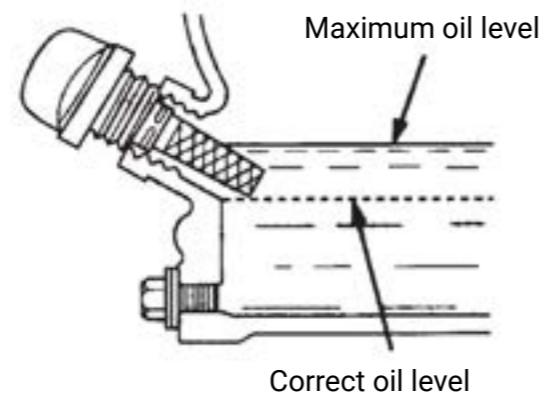
(1) Forward and backward motion: The power transmission occurs from the engine to the gear case, then through the perforated clutch, followed by the chain, and finally reaching the idler wheel.

(2) Vibratory motion: The vibratory motion is generated from the engine and transmitted through the gear case, centrifugal clutch, belt, and eventually to the idler wheel. The exciting force is produced by the hollow swage.

### PRE-OPERATION CHECK

1. OIL CHECK
  - » Remove the oil filler cap and check the engine oil level. If the oil level is below the lower level line, refill with suitable oil until it reaches the upper level line. Do not screw the filler cap beyond the specified limit. OIL CAPACITY: 0.3L
  - » ROLLER System Lubrication: Before changing the ramming system oil, first drain the existing oil, and then add 0.75

liters of new oil. Recommended engine oil for this system is SAE10W-30.

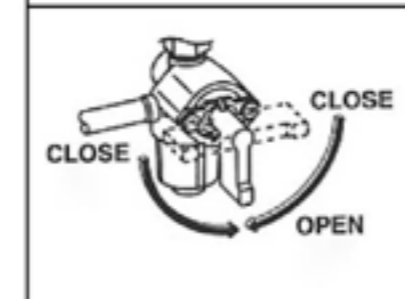
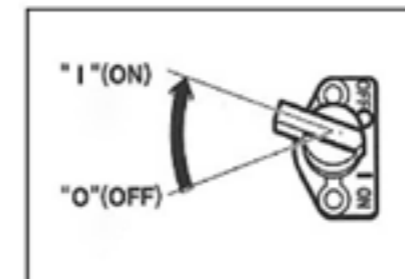
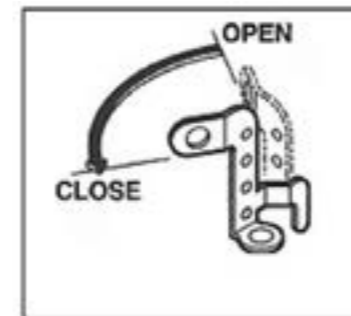


**CAUTION**  
Ensure you use fresh 4-stroke engine oil.

2. Maintaining the air cleaner is crucial for optimal equipment performance. Proper installation, regular servicing, and ensuring an adequate filter element are essential steps to prevent the introduction of dirt, which can lead to engine damage and wear. Keep the air filter element consistently clean to ensure the longevity and efficiency of the equipment.
3. Inspect and confirm the tightness of every bolt on the machine.
4. Check whether there is an adequate supply of fuel in the tank. Use recommended unleaded fuel oil, and avoid using fuel mixers. Keep the fuel tank clean.

## OPERATION

### POWER ON



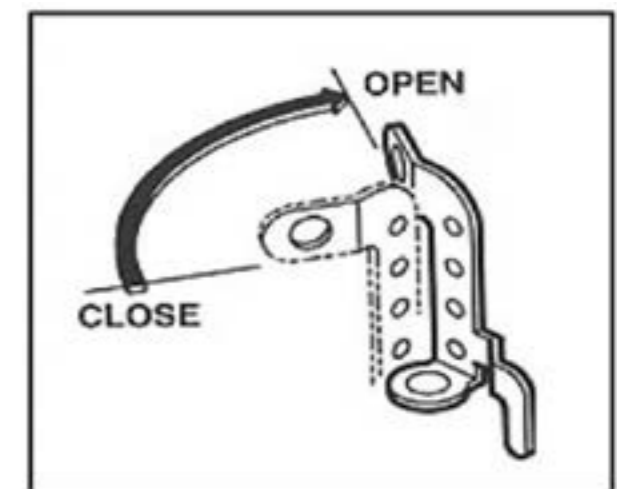
**CAUTION**  
Pull the rope handle slightly and then jerk immediately when you feel resistance. Hold the handle and release it step by step, allowing the rope to bounce back.

1. Switch on the engine by turning the engine switch to the "ON" position.
2. Set the fuel valve to the "NO" position by screwing it.
3. Adjust the choke valve lever to "NO" and move the throttle lever one or two steps rightward.
4. Pull the handle until you feel resistance, then pull the rope to start the engine.

**WARNING**  
When using standard oil machines, the air with low oxygen content will make the concentration of Oil in the oil-gas mixture too high, which will result in the reduction level of efficiency of engine. And the increase of the consumption of oil. Therefore it is necessary to change the nozzle of the carburetor with a smaller aperture and readjust the idle speed of the carburetor in order to improve the performance of the engine. But under the condition that the nozzle of the carburetor is fitted, the power of the engine will still reduce about 3.5% with each 300 meters raise of the sea level.

### USING THE ROAD ROLLER

1. After starting, open the choke on the carburetor and allow the machine to warm up for approximately 5 minutes.
2. Pull the operator handle while simultaneously pulling the accelerator control handle to the farthest rear position. Guide the roller with its handle, letting the machine pull itself forward.
3. For effective compaction, make sure the shoe contacts the ground flat, avoiding any uplift or pushing that might cause the machine to rest on its toe or heel, potentially resulting in damage. Otherwise, it may cause damage.



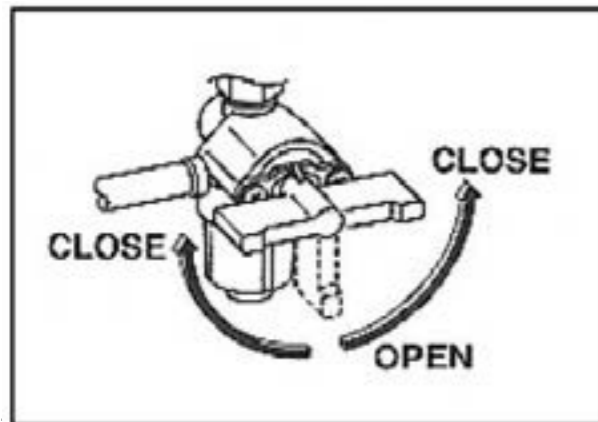
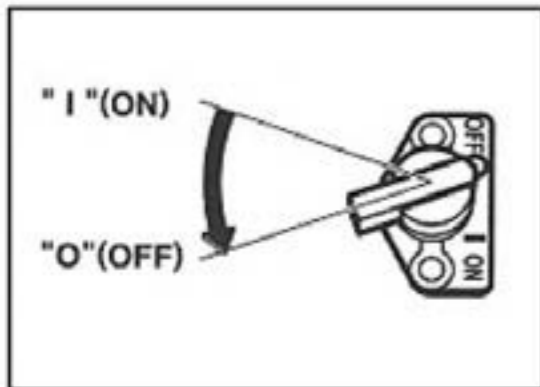
**WARNING**

- » After starting and warming up the machine, quickly pull the control handle forward. Ensure that the throttle is not in the half-full position. Otherwise, the road roller may jump disorderly, and the clutch will be in a state of half-startup, leading to rapid wear of the clutch and potential damage to the engine.
- » Exercise caution when operating on rough ground, as the road roller can tip easily. Be careful to avoid straining the wrist or other parts of the body.
- » Never leave the machine unattended.
- » Avoid running the machine on firm surfaces such as concrete.

## STOP ENGINE

In case of an emergency, immediately switch off the machine. Under normal circumstances, follow these steps to shut it down:

1. Push the oil throttle finger controlling switch to the foremost position to bring the road roller to a stop.



2. Turn the engine switch to OFF.
3. Push the oil valve to OFF.

**NOTE:** Do not stop the engine when it is running at a high speed, as it may lead to oil deterioration, elevated engine temperature, and the potential seizure of parts.

## MAINTENANCE

**WARNING**

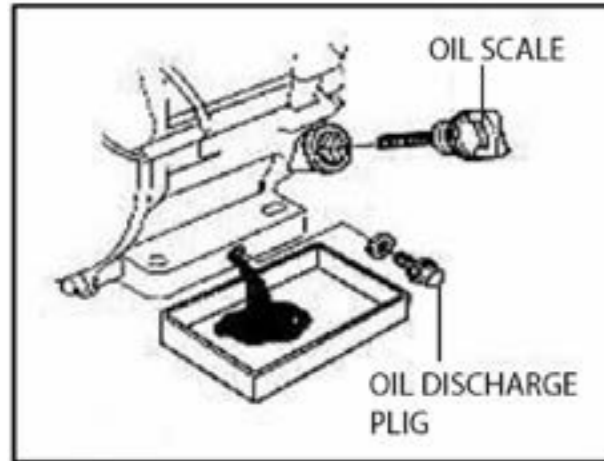
- » Always switch off the engine before conducting any examination or maintenance.
- » Ensure that the spark plug cover is unbolted before initiating any repairs.

## ENGINE PERIODIC CHART

Be sure to have the examination and maintenance for the machine periodically.

Maintenance content		Every Time Before Operation	Every Month or 20hours	Every 3 Month or 50 hours	Every 6 Month or 100 hours	Every Year or 300hours
Engine Oil	Examine oil surface	0				
	Exchange		0		0	
Air cleaner	Examine	0				
	Clean				0	
Carburetor Settling cup	Clean				0	
Spark plug	Examine and Clean			0		
Silencer	Clean				0	
Valve gap	Examine and Adjust					0
Petrol box And filter	Clean					0
Oil pipe	Examine and Exchange					0

## ENGINE OIL



1. When exchanging the engine oil, it is advisable to warm the engine to facilitate the quick and complete discharge of oil.
2. Unscrew the oil scale first, and then proceed to unscrew the oil discharge plug to drain the oil.
3. Ensure the oil discharge plug is tightly screwed back in.
4. Refill the oil and inspect the oil level to confirm adequacy.
5. Install and securely screw down the oil scale.

### CAUTION

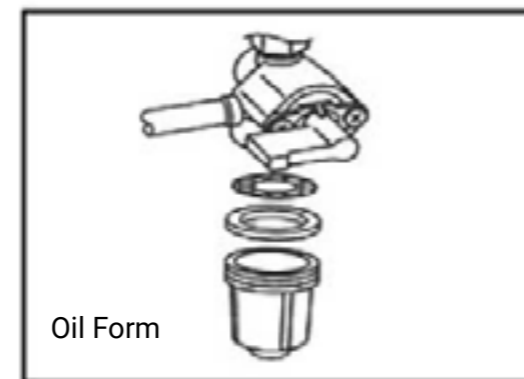
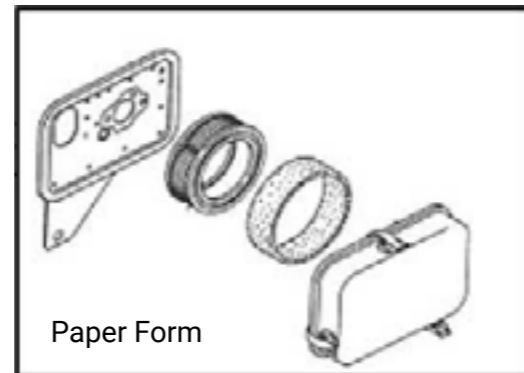
There is a risk of cancer from frequent contact with oil. Therefore, it is essential to wash hands thoroughly with soap after working with oil. Always use a container when discharging oil to prevent spills on the ground and avoid contaminating the surroundings.

## AIR CLEANER

The accumulation of dirt can obstruct airflow to the carburetor. It is crucial to clean the air cleaner regularly, especially in environments prone to dirt and dust.

1. Remove the swing nut and the outer shell of the air cleaner, then remove the filter element and set them apart. Check for any breakage in the filter elements; if damaged, replace them.

2. For foam filter elements: wash with a household cleaning solution and rinse thoroughly. Alternatively, wash with a non-flammable cleanser or a substance with a high flash point. After washing, allow it to dry and then immerse the element in clean engine lubricant, squeezing out excess oil. Excessive oil on the foam may result in smoke during engine startup.
3. For paper elements: gently tap the element on a hard surface to remove dust or use high-pressure air flow from the interior to exterior. Avoid brushing dust away, as brushing can push dust into the fibers. Replace the element if it becomes very dirty.



### WARNING

Do not use oil or a low-burning point agent to clean the air cleaner, as it may result in a fire or explosion hazard. Operating the engine without the air cleaner is not recommended, as it can cause significant damage to the engine.

## SETTLING CUP

To clean the carburetor and the oil switch oily water separator, follow these steps:

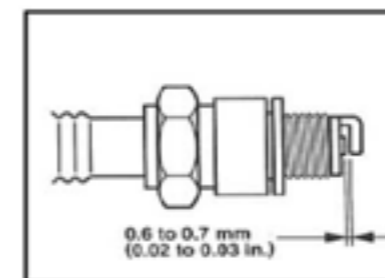
1. Close the oil valve.
2. Remove the settling cup and O-ring.
3. Clean these components using a non-flammable or high-burning point cleaning agent.
4. After cleaning, ensure they are thoroughly dried.
5. Reinstall the cleaned components, including the O-type ring.
6. Securely screw them down.
7. Open the oil valve and check for proper sealing.

### WARNING

- » No smoking or open flames while cleaning the cup.
- » After installation, be sure to examine if it is well sealed and then open.

## SPARK PLUG

1. Remove the spark plug cap and unscrew the spark plug using the relevant sleeve spanner.
2. Exchange the spark plug if the electrode is eroded by electricity or if the insulation part is broken.
3. If there is significant carbon accumulation, use a metal brush to clean it out and then reinstall the spark plug.
4. Measure the plug gap with a feeler gauge and adjust it within the normal scale of 0.7-0.8mm.
5. Examine whether the spark plug washer is broken.



6. Hand-tighten the spark plug initially. (Avoid random or improper screwing.)

## CARBURETOR IDLE SPEED ADJUSTMENT

1. Start and warm up the engine.
2. Adjust the idle speed using the adjustable screw to achieve the standard idle speed. Standard idle speed: 1,500 ± 150 rpm.

### WARNING

- » Do not use a plug with an incorrect ignition scale.
- » Ensure there is a certain gap and no foreign matter in the spark plug to ensure the normal operation of the engine.
- » The temperature of the vent pipe is very high just after shutdown. Perform maintenance only after it has cooled off.

## HANDREST ADJUSTMENT

The height of the handrest is adjustable.

1. Loosen the bolt on the actuating arm to adjust the required height.

## TRANSPORT AND STORAGE

1. Ensure to turn off the machine during short transports and keep the engine level to prevent oil leakage.
2. Make sure to drain the fuel from the gasoline tank and the engine oil during long transports.

### CAUTION

If transport without discharging the engine oil is unavoidable, ensure that the gradient is less than 30° and is not tilted bottom-up. Tipping beyond this angle may cause the engine oil to flow into the cylinder or air cleaner, affecting its normal operation.

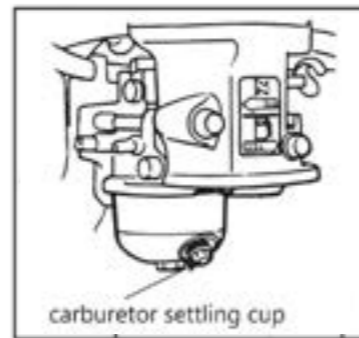
## LONG-TERM STORAGE OF OTHER PARTS OF THE ROLLER:

For the storage of the roller for a period exceeding 30 days, it is recommended to follow these guidelines:

- » Drain the fuel tank completely.
- » Run the engine until the fuel in the injection system is entirely consumed.
- » Completely drain used oil from the engine crankcase and fill it with fresh, clean oil. Follow the procedures outlined in the engine manual for proper engine storage.
- » Drain the water tank.
- » Clean the entire roller and engine compartment.
- » If applicable, remove the battery and store it in a cool, dry place.
- » Cover the roller and place it in a clean, dry area protected from harsh elements.

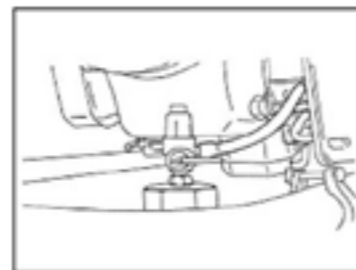
## TRANSPORTATION

1. Be sure to switch off the machine during short transports and keep the engine level to prevent oil leakage.
2. If a long transport is necessary, make sure to discharge the oil from the gasoline tank and the engine.



## STORAGE

3. Ensure to discharge all the oil from the petrol tank before storage and maintain the storage place in a dry and clean condition.
4. Shut the oil throttle and open the carburetor settling cup.
5. Open the oil throttle and discharge the oil into a prepared container.
6. Dry out the oil and securely screw down the settling cup.
7. Remove the spark plug, add a spoon of engine oil to the cylinder, gently pull the starter rope several times to evenly distribute the oil, and then reinstall the spark plug.
8. Place a cover on the engine to prevent dust accumulation.



### CAUTION

If it is necessary to transport the equipment without discharging the engine oil, ensure that the gradient is less than 30 degrees and remains still, avoiding tilting it bottom-up. This precaution prevents engine oil from flowing into the cylinder or air cleaner, which could adversely affect its normal operation.

## TROUBLESHOOTING

SYMPTOM	REASON
Unable to start the engine or disorderliness of the engine	No fuel in tank
	Engine not switched on.
	Oil valve not open.
	Blocked filter.
	Lack of oil reaching the carburetor.
	Fouled or broken spark plug.
Engine exhibits difficulty in acceleration, hard starting, or erratic running.	Fouled spark plug.
	Clogged air cleaner.
	Lack of oil reaching the carburetor.
	Worn piston rings or damaged air valves.
Engine runs, but roller does not tamp.	Severely damaged clutch.
	Broken connecting rod or crank gear.
Engine runs, but road roller operation is erratic.	Loose screw at the engine's connecting tray.
	Broken working spring.
	Engine operating speed is too high.

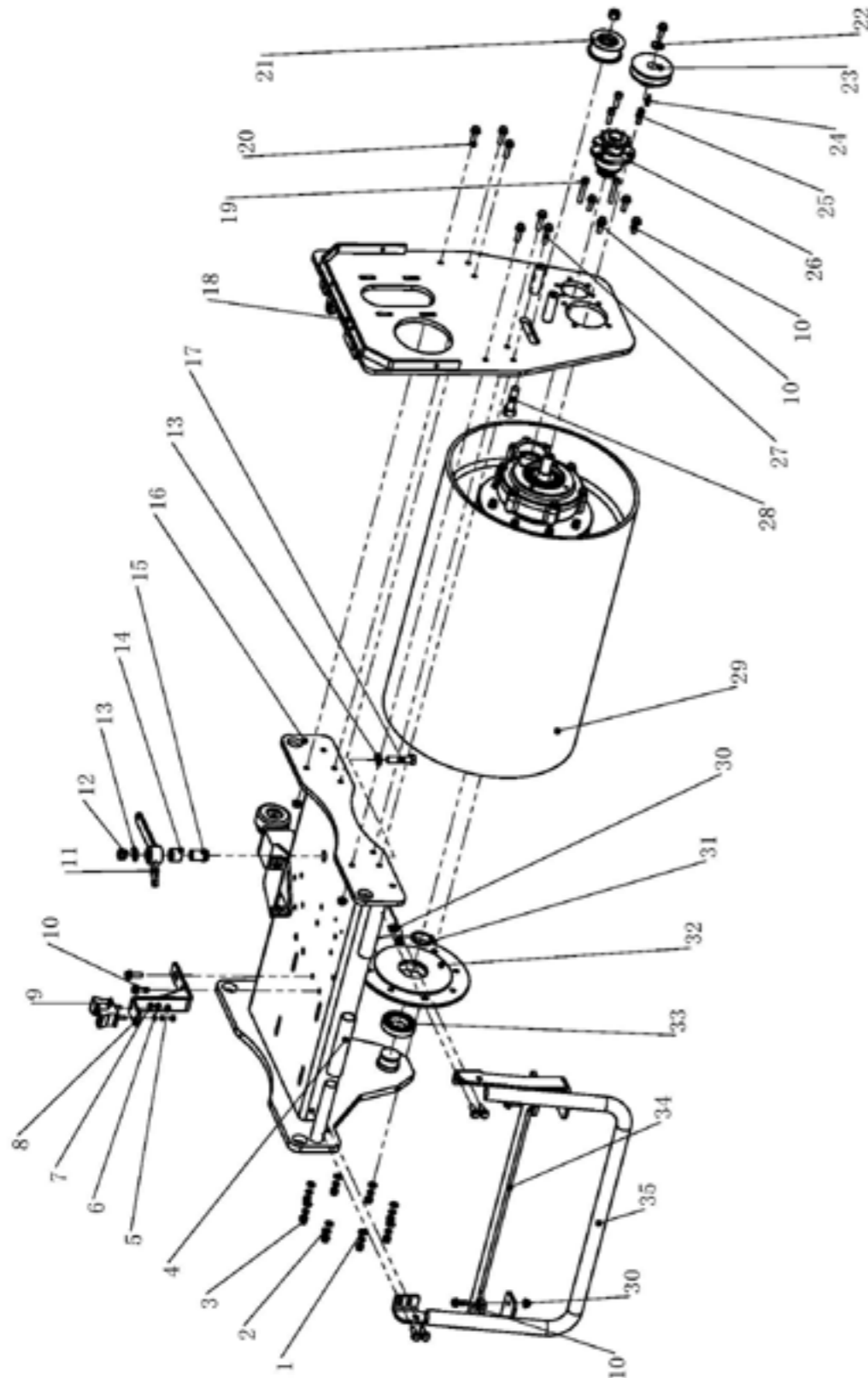
## SPECIFICATION

Engine type	Honda GX160
Power kw (hp)	4.0 (5.5)
Weight kg (bs)	200
Transmission	Static Hydraulic Drive
Roller size	600 X 500/600 X 400
Frequency vpm (HZ)	4320 (72)
Centrifugal force (KN)	13.5
Static linear load (N/crn)	45
Travel speed (Km/h)	0-4
Water tank capacity (L)	16



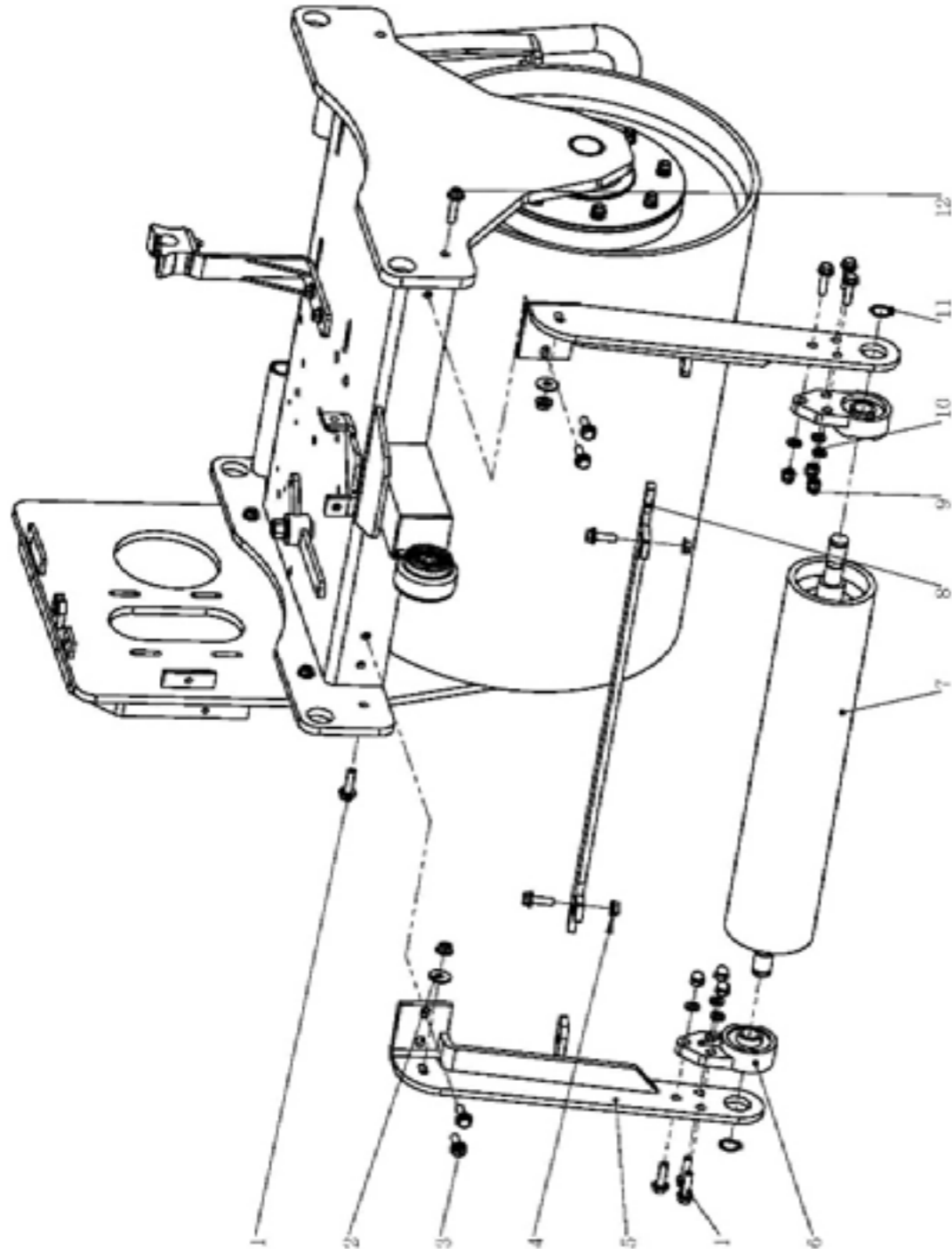
# REPLACEMENT PARTS LIST

## SINGLE-DRUM ROLLER PARTS (A)



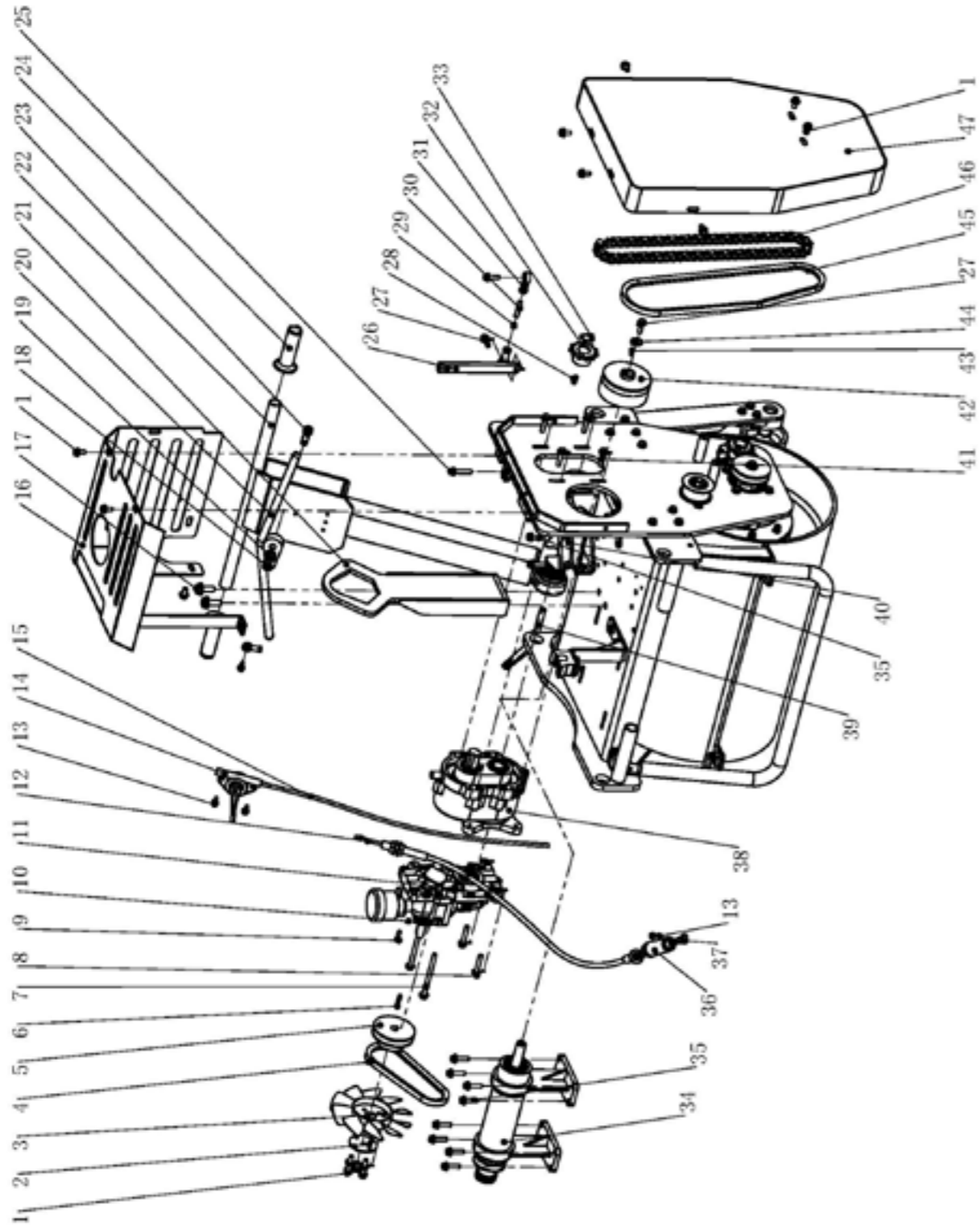
PART NO.	DESCRIPTION	QYT
CNYL641-A001	Flat washer $\phi 8$	8
CNYL641-A002	Spring washer $\phi 8$	8
CNYL641-A003	Nut M8-N	8
CNYL641-A004	Rubber sleeve	2
CNYL641-A005	Nut M6	2
CNYL641-A006	Spring washer $\phi 6$	2
CNYL641-A007	Flat washer $\phi 6$	2
CNYL641-A008	Hoop bracket	1
CNYL641-A009	Tank hoop	1
CNYL641-A010	Hexagon bolt M8x25	13
CNYL641-A011	Return mechanism 5	1
CNYL641-A012	Nut M12	2
CNYL641-A013	Flat washer 12	2
CNYL641-A014	Bearing HK202620	1
CNYL641-A015	Return mechanism 4	1
CNYL641-A016	Rack	1
CNYL641-A017	Hexagon bolt M12X50	1
CNYL641-A018	Side frame	1
CNYL641-A019	Hexagon socket bolt M8X50	2
CNYL641-A020	Hexagon bolt M8x30	4
CNYL641-A021	Tensioner pulley assy	1
CNYL641-A022	Flat washer M8	1
CNYL641-A023	Eccentric shaft pulley	1
CNYL641-A024	Flat key 6X25	1
CNYL641-A025	Hexagon socket bolt M8X25	3
CNYL641-A026	Drum gearbox parts	1
CNYL641-A027	Hexagon bolt M8x35	2
CNYL641-A028	Tensioner pulley bolt	1
CNYL641-A029	Drum assy	1
CNYL641-A030	Nut M8	8
CNYL641-A031	Axis card $\phi 40$	1
CNYL641-A032	Drum connecting plate	1
CNYL641-A033	Bearing 6008	1
CNYL641-A034	Mud scraping board	1
CNYL641-A035	Pipe bracket	1

## SINGLE-DRUM ROLLER PARTS (B)



PART NO.	DESCRIPTION	QYT
CNYL641-B001	Hexagon bolt M8×30	7
CNYL641-B002	Flat washer M8	2
CNYL641-B003	Hexagon bolt M8×25	8
CNYL641-B004	Nut M8	4
CNYL641-B005	Rear support plate	2
CNYL641-B006	Bearing FB204	2
CNYL641-B007	Rear wheel	1
CNYL641-B008	Mud scraping board	1
CNYL641-B009	Nut M8	6
CNYL641-B010	Flat washer φ8	6
CNYL641-B011	Circlip φ20	2
CNYL641-B012	Hexagon bolt M8×35	1

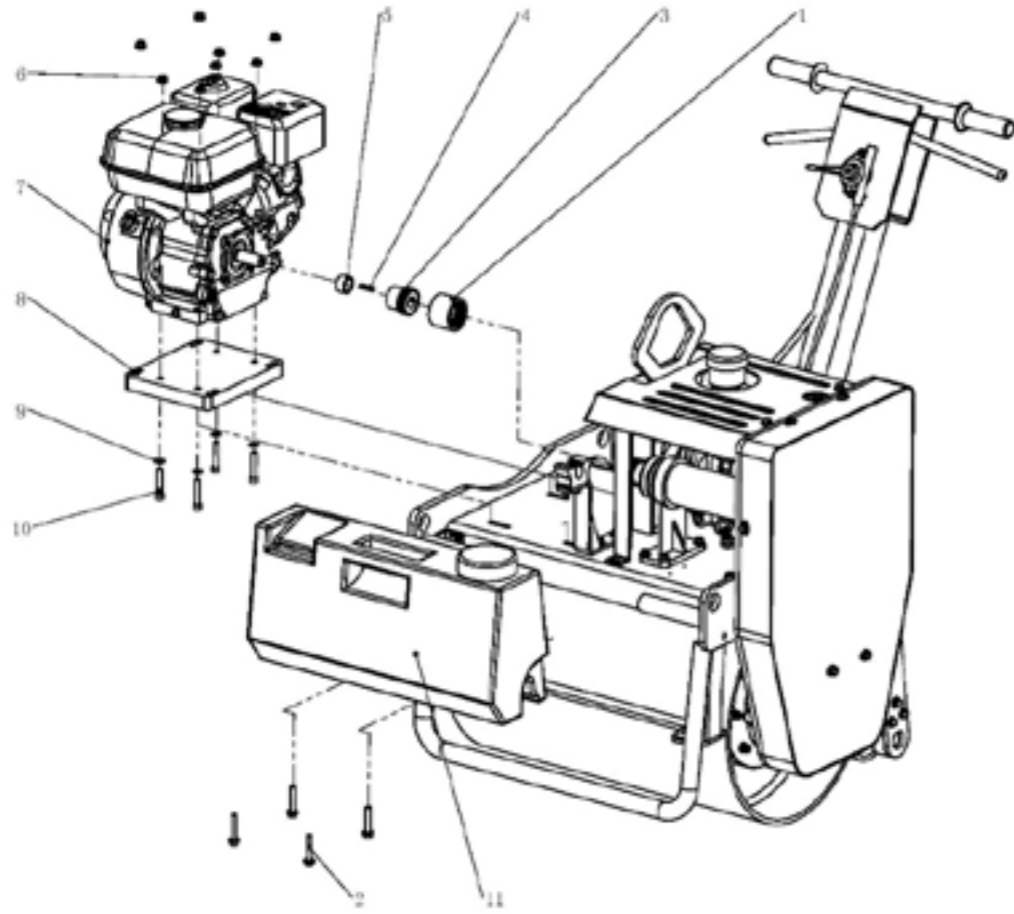
## SINGLE-DRUM ROLLER PARTS (C)



PART NO.	DESCRIPTION	QYT
CNYL641-C001	Hexagon bolt M8×16	16
CNYL641-C002	Fan baffle	1
CNYL641-C003	Fan	1
CNYL641-C004	Belt A20	1
CNYL641-C005	Hydrostatic driver input shaft pulley	1
CNYL641-C006	Flat key 5X30	1
CNYL641-C007	Hexagon bolt M8×110	2
CNYL641-C008	Hexagon bolt M8×45	2
CNYL641-C009	Hexagon socket bolt M6×20	1
CNYL641-C010	Hexagon socket bolt M6X10	1
CNYL641-C011	Hydraulic pump (HYDRO-GEAR)	1
CNYL641-C012	Control cable	1
CNYL641-C013	Hexagon bolt M6X20	4
CNYL641-C014	Throttle lever	1
CNYL641-C015	Throttle cable	1
CNYL641-C016	Seal plate	1
CNYL641-C017	Hexagon bolt M12×30	2
CNYL641-C018	Nut M12	1
CNYL641-C019	Flat washer φ12	1
CNYL641-C020	Reversing handle	1
CNYL641-C021	Lifting frame	1
CNYL641-C022	Upper handle	1
CNYL641-C023	Bolt M12X50	1

PART NO.	DESCRIPTION	QYT
CNYL641-C024	Handle grip	2
CNYL641-C025	Hexagon bolt M8×40	1
CNYL641-C026	Reversing joint	1
CNYL641-C027	Hexagon bolt M8×25	5
CNYL641-C028	Flat key 8X20	1
CNYL641-C029	Nut M6	2
CNYL641-C030	Bolt M8X40	1
CNYL641-C031	Bearing M8	2
CNYL641-C032	Sprocket wheel	1
CNYL641-C033	Circlip φ25	1
CNYL641-C034	Clutch shaft assembly	1
CNYL641-C035	Hexagon bolt M8×30	10
CNYL641-C036	Return mechanism (Optional)	1
CNYL641-C037	Bearing M6	2
CNYL641-C038	Gear box	1
CNYL641-C039	Adjusting handle M12×65	1
CNYL641-C040	Cable setting plate	1
CNYL641-C041	Hexagon bolt M8×35	4
CNYL641-C042	Clutch assy	1
CNYL641-C043	Flat key 5X20	1
CNYL641-C044	Flat washer M8	1
CNYL641-C045	Belt	1
CNYL641-C046	Chain	1
CNYL641-C047	Belt cover	1

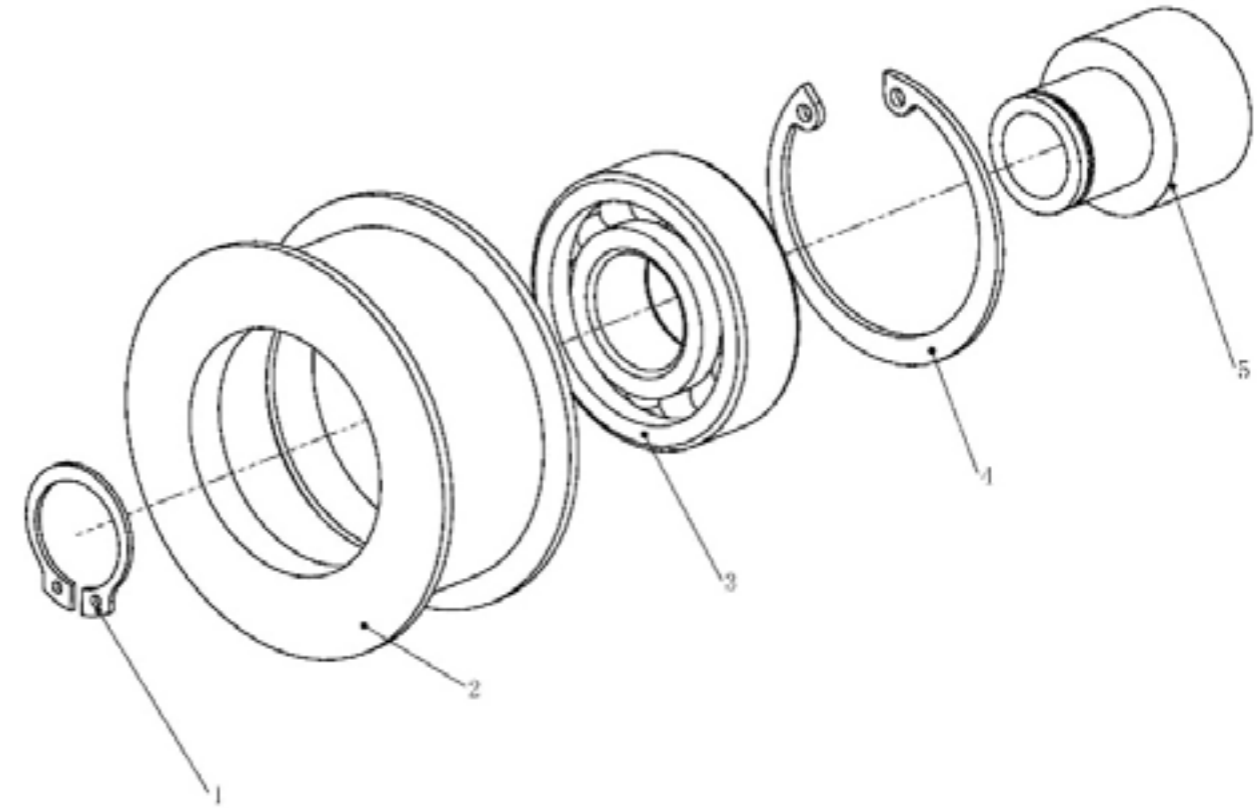
## SINGLE-DRUM ROLLER PARTS (D)



PART NO.	DESCRIPTION	QYT
CNYL641-D001	Nylon coupling	1
CNYL641-D002	Hexagon bolt M8x45	4
CNYL641-D003	Shaft gear	1
CNYL641-D004	Flat key 5X30	1
CNYL641-D005	Engine gasket 15mm	1
CNYL641-D006	Nut M8	8

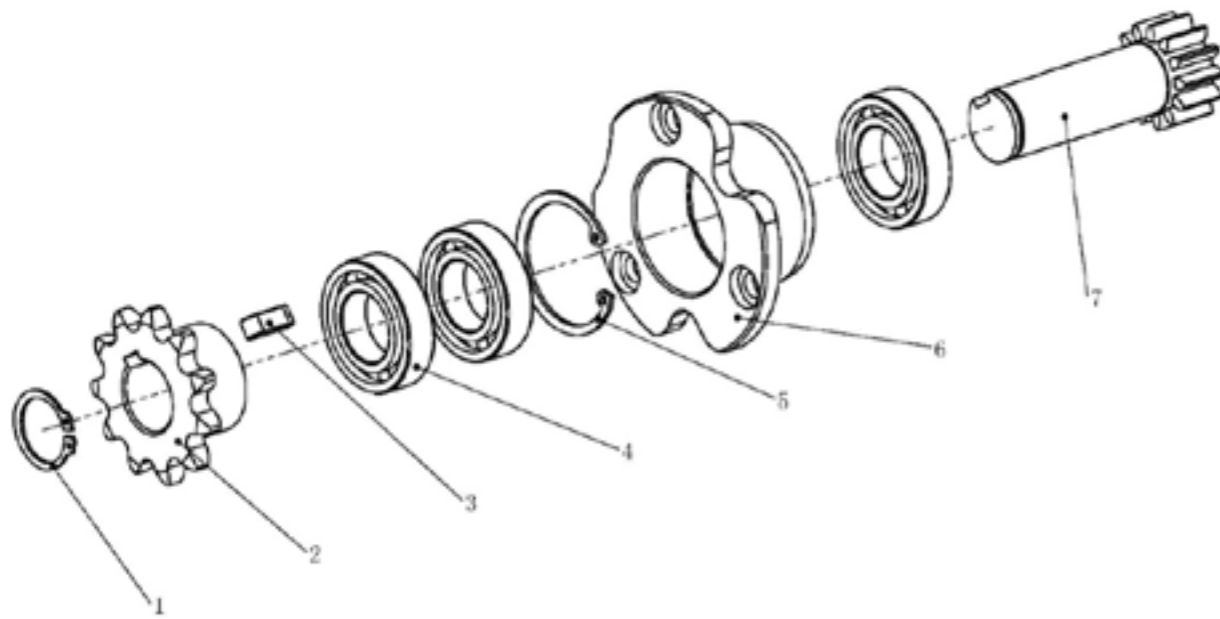
PART NO.	DESCRIPTION	QYT
CNYL641-D007	Engine	1
CNYL641-D008	Engine base	1
CNYL641-D009	Flat washer φ8	4
CNYL641-D010	Hexagon socket bolt M8X45	4
CNYL641-D011	Water tank	1

## TENSIONER PULLEY ASSY



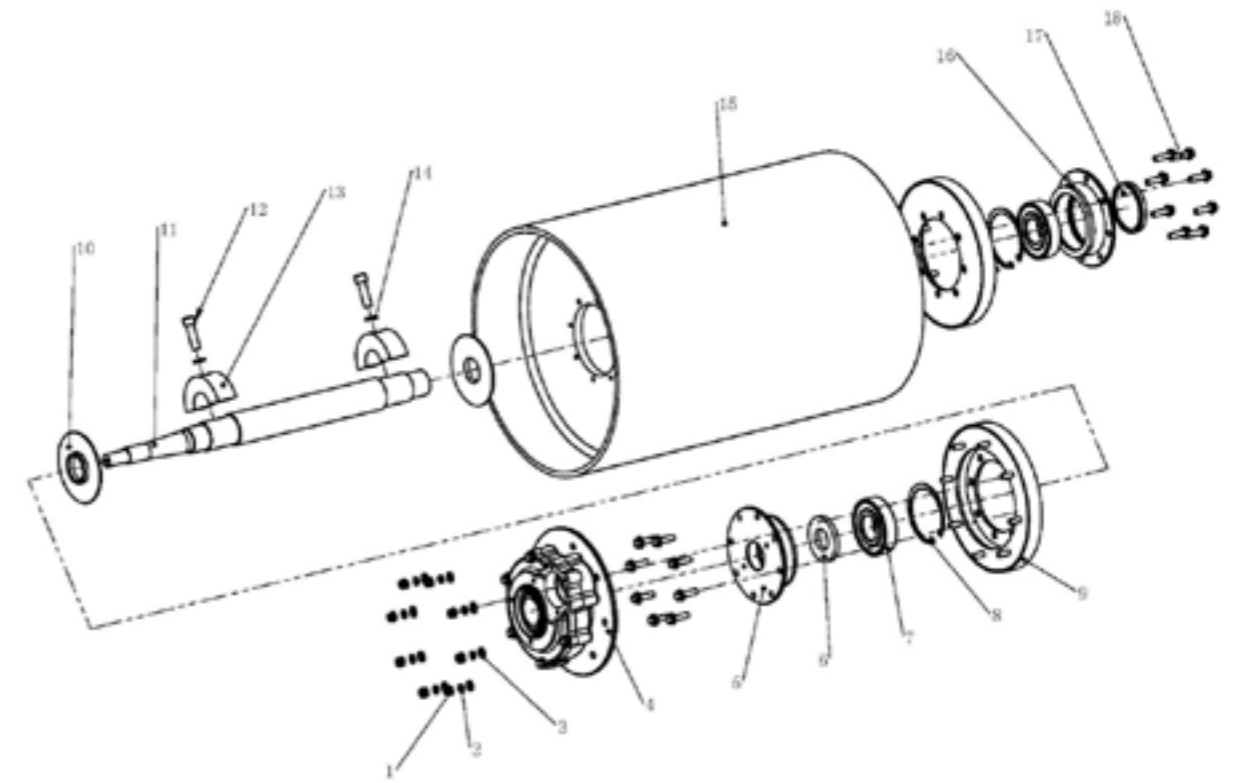
PART NO.	DESCRIPTION	QYT
CNYL641-A021-01	Circlip φ20	1
CNYL641-A021-02	Tensioner pulley	1
CNYL641-A021-03	Bearing 6204	1
CNYL641-A021-04	Hole retainer φ47	1
CNYL641-A021-05	Tensioner pulley sleeve	1

## DRUM GEARBOX PARTS (CNYL641-A026)



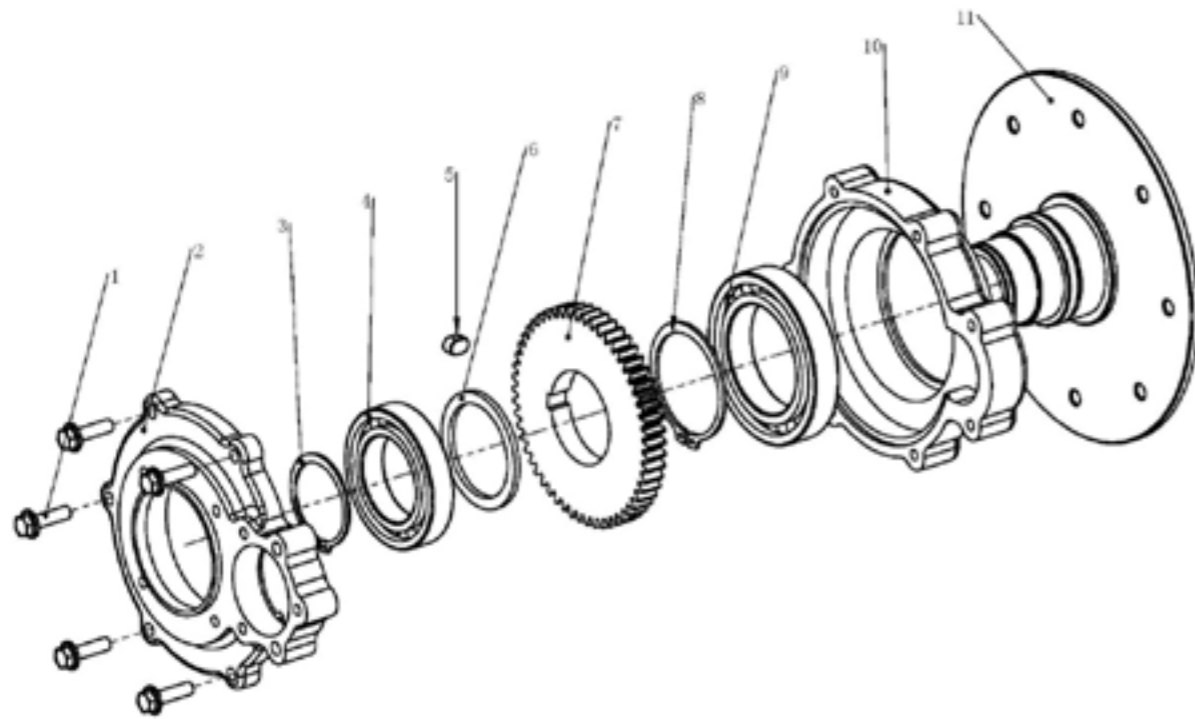
PART NO.	DESCRIPTION	QYT
CNYL641-A026-01	Circlip $\phi 25$	1
CNYL641-A026-02	Sprocket wheel	1
CNYL641-A026-03	Flat key 8X20	1
CNYL641-A026-04	Bearing 6005	3
CNYL641-A026-05	Hole retainer $\phi 47$	1
CNYL641-A026-06	Small gear connecting shaft sleeve	1
CNYL641-A026-07	Small gear	1

## DRUM ASSY (CNYL641-A029)



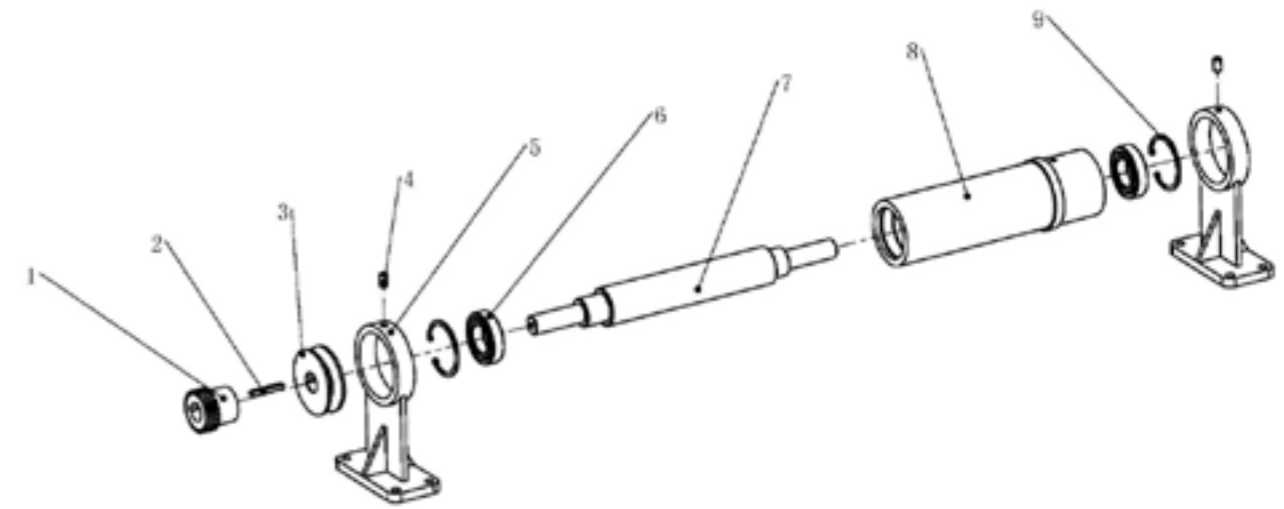
PART NO.	DESCRIPTION	QYT
CNYL641-A029-01	Nut M8-N	8
CNYL641-A029-02	Spring washer $\phi 8$	8
CNYL641-A029-03	Flat washer $\phi 8$	8
CNYL641-A029-04	Drum gearbox	1
CNYL641-A029-05	Bearing cover	1
CNYL641-A029-06	Oil seal 35x72x8	1
CNYL641-A029-07	Bearing 6308-2Z	2
CNYL641-A029-08	Hole retainer $\phi 90$	2
CNYL641-A029-09	Drum rubber connecting plate	2
CNYL641-A029-10	Dustproof cover	2
CNYL641-A029-11	Drum shaft	1
CNYL641-A029-12	Hexagon socket bolt M12x40	2
CNYL641-A029-13	Eccentric block	2
CNYL641-A029-14	Spring washer $\phi 12$	2
CNYL641-A029-15	Drum	1
CNYL641-A029-16	Bearing cover	1
CNYL641-A029-17	Nylon cap	1
CNYL641-A029-18	Hexagon bolt M8x30	16

## DRUM GEARBOX (CNYL641-A29-04)



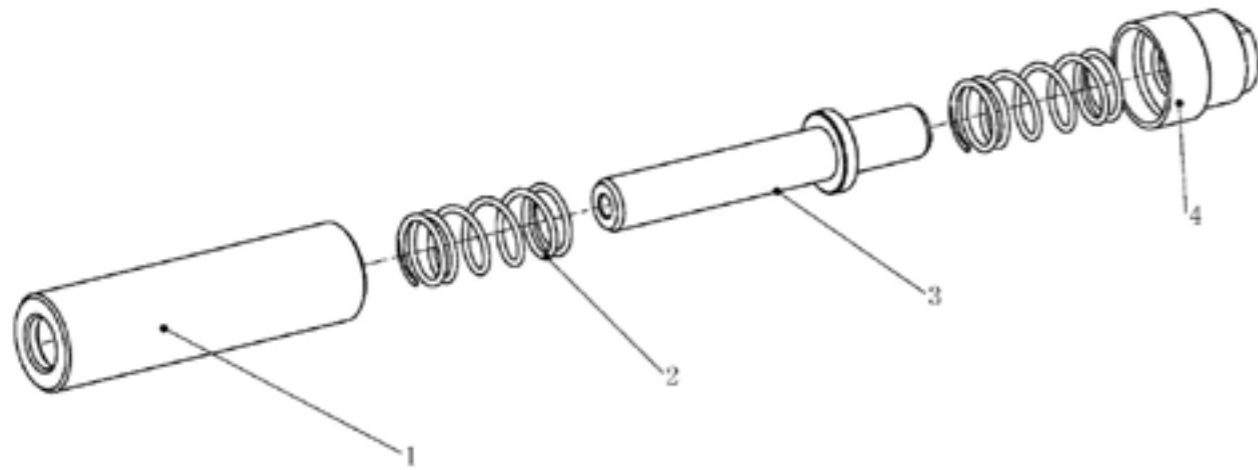
PART NO.	DESCRIPTION	QYT
CNYL641-A029-04-01	Hexagon bolt M8x30	5
CNYL641-A029-04-02	Drum gearbox cover	1
CNYL641-A029-04-03	Circlip $\phi$ 55	1
CNYL641-A029-04-04	Bearing 6011	1
CNYL641-A029-04-05	Flat key 10X15	1
CNYL641-A029-04-06	Drum gear gasket	1
CNYL641-A029-04-07	Drum big gear	1
CNYL641-A029-04-08	Circlip $\phi$ 70	1
CNYL641-A029-04-09	Bearing 6014	1
CNYL641-A029-04-10	Drum gearbox house	1
CNYL641-A029-04-11	Drum gearbox connecting plate	1

## CLUTCH SHAFT ASSY (CNYL641-C034)



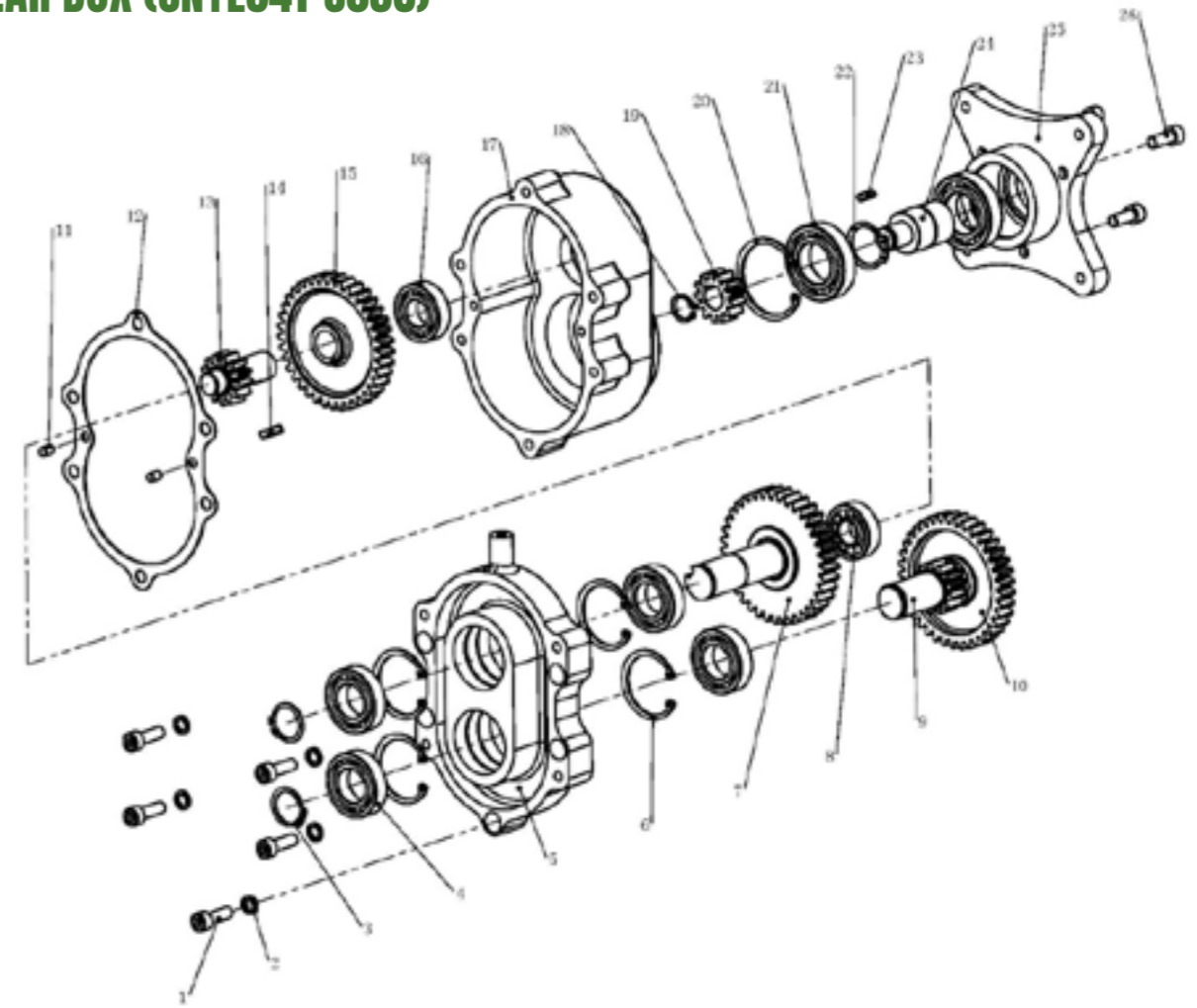
PART NO.	DESCRIPTION	QYT
CNYL641-C034-01	Shaft gear	1
CNYL641-C034-02	Flat key 5X40	1
CNYL641-C034-03	Small pulley	1
CNYL641-C034-04	Hexagon socket bolt M8x16	2
CNYL641-C034-05	Lift ring 2	2
CNYL641-C034-06	Bearing 6006	2
CNYL641-C034-07	Clutch shaft	1
CNYL641-C034-08	Clutch cylinder	1
CNYL641-C034-09	Hole retainer $\phi$ 55	2

## RETURN MECHANISM (CNYL641-C036) OPTIONAL



PART NO.	DESCRIPTION	QYT
CNYL641-C036-01	Return mechanism 1	1
CNYL641-C036-02	Return spring	2
CNYL641-C036-03	Return mechanism 2	1
CNYL641-C036-04	Return mechanism 3	1

## GEAR BOX (CNYL641-C038)



PART NO.	DESCRIPTION	QYT
CNYL641-C038-01	Hexagon socket bolt M8X25	5
CNYL641-C038-02	Spring washer φ8	5
CNYL641-C038-03	Circlip φ25	2
CNYL641-C038-04	Bearing 6005	4
CNYL641-C038-05	Gearbox cover	1
CNYL641-C038-06	Hole retainer φ47	4
CNYL641-C038-07	Output shaft gear	1
CNYL641-C038-08	Bearing NJ203EM	1
CNYL641-C038-09	Driven shaft gear	1
CNYL641-C038-10	Driven shaft gear	1
CNYL641-C038-11	Pin	2
CNYL641-C038-12	Paper gasket	1
CNYL641-C038-13	Driven shaft gear	1
CNYL641-C038-14	Flat key 5X20	1
CNYL641-C038-15	Driven shaft gear	1

PART NO.	DESCRIPTION	QYT
CNYL641-C038-16	Bearing 6004	1
CNYL641-C038-17	Gearbox house	1
CNYL641-C038-18	Circlip φ17	1
CNYL641-C038-19	Input shaft gear	1
CNYL641-C038-20	Hole retainer φ55	1
CNYL641-C038-21	Bearing 6006	2
CNYL641-C038-22	Circlip φ30	1
CNYL641-C038-23	Flat key 4X16	1
CNYL641-C038-24	Input shaft	1
CNYL641-C038-25	Hydrostatic connecting plate	1
CNYL641-C038-26	Hexagon socket bolt M8X20	3



**BIGGER BOYZ TOYZ**  
COMMERCIAL

# BBTA.COM.AU

Copyright © Bigger Boyz Toyz Australia

Unit 2/3 Delta Place Albion Park Rail NSW 2527 • 02 4257 4787

